



Product catalog
A LOCK FOR EVERY LOOK.



Trusted in over
40 million
homes.

For more than 95 years, Schlage has offered durable door hardware in a range of unique style combinations to express any personality.

So welcome home. Welcome thousands of possibilities. **Welcome style.**

Welcome **keyless.**

Schlage **Sense**™

EVERY DAY, MADE EASIER.



Schlage **Connect**™

HOME ACCESS ANYWHERE.



Schlage **Touch**™

KEYS, YOUR NUMBER IS UP.



Keypad locks

CODE OR KEY. YOU DECIDE.



Connected options



Schlage **Sense™**
(BE479)



Schlage **Connect™**
(BE469)



Schlage **Connect™**
(BE468)

KEYLESS BENEFIT

Bluetooth® Smart technology lets you use your phone as a key

Connects to your home automation system

Connects to your home automation system

MODE OF ENTRY

Works with Apple HomeKit™ so you can unlock your door using Siri®, or enter your user code on the touchscreen

Give access remotely or enter your user code on the touchscreen

Give access remotely or enter your user code on the touchscreen

GRADING

Grade 1 highest residential security rating

Grade 1 highest residential security rating

Grade 2 higher residential security rating

ADVANCED SECURITY

Built-in alarm technology senses potential door attacks

Built-in alarm technology senses potential door attacks

—

HOME AUTOMATION

Apple HomeKit Technology provides advanced security with end-to-end encryption between the Schlage Sense™ lock and your iPhone®, iPad® or iPod touch®

Lock or unlock from anywhere* by connecting with Z-Wave®

Lock or unlock from anywhere* by connecting with Z-Wave®

HomeKit™ requires an iPhone®, iPad®, or iPod touch® with iOS 8.4 or later.

* Remote access requires a compatible home automation or security system. Features dependent on platform provider.
For more info: schlage.com/partners

Keyless options



Schlage **Touch**[™]
(BE375 & FE695)



Keypad locks
(BE365 & FE595)



KEYLESS BENEFIT

No more keys to lose, hide, carry or forget

Keyless convenience

MODE OF ENTRY

Enter your user code on the touchscreen

Enter your user code on the keypad

GRADING

Grade 2
higher residential
security rating

Grade 2
higher residential
security rating

ADVANCED SECURITY

Keyless design is 100% bump-proof and pick-proof

—

STYLE & AESTHETICS

Sleek, low profile design with LED down lighting

Wear-resistant silicone-coated back-lit keypad

Welcome **inspiration.**



Be stately.
Be playful.
Be serene.

Whatever you want your home to be, it all starts with being inspired. Not just by products, but possibilities.

And countless combinations to make your space uniquely, undeniably yours.

DECORATIVE TRIM

Pair a knob or lever with our inspired decorative trim options to bring your vision to life.*



Latitude lever
Century trim
Matte Black



Accent lever
Camelot trim
Satin Nickel



Birmingham lever
Addison trim
Aged Bronze



Addison



Andover**



Brookshire



Camelot



Century



Collins



Greenwich



Greyson**



Upland**



Wakefield

* LOCKS SHIP COMPLETE WITH TRIM ATTACHED

** No matching deadbolt

Product guide

ELECTRONIC SECURITY



Schlage Sense™
Camelot & Century trim
Deadbolt only



**Schlage Connect™
with alarm**
Camelot & Century trim
Deadbolt only



Schlage Connect™
Camelot & Century trim
Deadbolt only



Schlage Touch™
Camelot & Century trim
Deadbolt & lever options



Schlage Keypads
Plymouth & Camelot trim
Deadbolt & lever options

MECHANICAL SECURITY

B-SERIES DEADBOLTS



Single
cylinder



Double
cylinder

F-SERIES HANDLESETS



Addison



Brookshire



Camelot



Century



Greenwich



Plymouth



Wakefield

F-SERIES LEVERS AND KNOBS



Accent



Avanti



Avila



Birmingham



Broadway



Elan



Flair



Jazz



Latitude



Manhattan



Merano



Northbrook



Sacramento



Andover



Bell



Bowery



Georgian



Orbit



Plymouth



Siena

Bright Brass
505/605

Satin Brass
608

Antique Brass
609

Oil Rubbed
Bronze
613

Polished Nickel
618

Satin Nickel
619

Antique Pewter
620

Distressed
Nickel
621

Matte Black
622

Bright Chrome
625

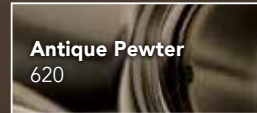
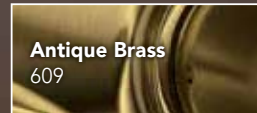
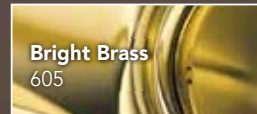
Satin Chrome
626

Aged Bronze
716



INSPIRED DESIGN. PROVEN, GRADE 3 SECURITY.

Schlage® J-Series products perform without compromise — at a price that won't compromise your budget.



HANDLESETS



Barcelona



Paris



Barcelona



Paris

DEADBOLTS



Single cylinder

LEVERS AND KNOBS



Dover



LaSalle



Marin



Seville



Solstice



Torino



Byron



Corona



Stratus

BE-Series & FE-Series finish options

	505/605	608	609		613	618	619	620	621	622	625	626	716
KEYPAD DEADBOLTS (BE365)													
Camelot keypad deadbolt	▪		▪		▪		▪	▪			▪	▪	▪
Plymouth keypad deadbolt			▪		▪		▪	▪			▪	▪	▪
KEYPAD LOCKS (FE595)													
Camelot keypad with Accent lever	▪		▪		▪		▪	▪			▪	▪	▪
Camelot keypad with Georgian knob	▪		▪		▪		▪						▪
Plymouth keypad with Accent lever							▪	▪					▪
Plymouth keypad with Latitude lever							▪					▪	
Plymouth keypad with Elan lever												▪	
Plymouth keypad with Flair lever	▪		▪		▪		▪	▪			▪	▪	▪
Plymouth keypad with Jazz lever												▪	
Plymouth keypad with Plymouth knob	▪						▪						
SCHLAGE TOUCH DEADBOLTS (BE375)													
Camelot keyless touchscreen deadbolt	▪		▪				▪			▪	▪	▪	▪
Century keyless touchscreen deadbolt							▪			▪	▪	▪	▪
SCHLAGE TOUCH LEVERS (FE695)													
Camelot keyless touchscreen with Accent lever	▪		▪				▪			▪	▪	▪	▪
Camelot keyless touchscreen with Flair lever	▪		▪				▪					▪	▪
Century keyless touchscreen with Broadway lever							▪			▪	▪	▪	▪
Century keyless touchscreen with Merano lever							▪			▪	▪	▪	▪
Century keyless touchscreen with Latitude lever							▪			▪	▪	▪	▪
SCHLAGE CONNECT (BE468 & BE469)													
Camelot touchscreen deadbolt	▪						▪				▪		▪
Century touchscreen deadbolt							▪				▪	▪	▪
SCHLAGE SENSE													
Camelot smart deadbolt							▪						▪
Century smart deadbolt							▪			▪			

	505/605	608	609		613	618	619	620	621	622	625	626	716
HANDLESETS					HANDLESETS								
Addison	■		■				■	■	■	■	■		■
Brookshire	■		■				■						■
Camelot	■	■	■		■		■	■		■	■		■
Century	■		■			■	■			■	■	■	■
Greenwich						■	■			■	■	■	■
Plymouth	■		■		■		■	■		■	■	■	■
Wakefield	■		■		■	■	■				■	■	■
DEADBOLTS					DEADBOLTS								
Keyed one side (B60)	■	■	■		■	■	■	■	■	■	■	■	■
Keyed two sides (B62)	■	■	■		■	■	■	■	■	■	■	■	■
DECORATIVE DEADBOLT & INSIDE HANDLESET TRIM					DECORATIVE DEADBOLT & INSIDE HANDLESET TRIM								
Addison	■		■				■		■	■	■		■
Andover*	■		■		■		■	■	■	■	■	■	■
Brookshire			■				■						■
Camelot	■	■	■		■		■	■		■	■		■
Century						■	■			■	■	■	■
Greenwich						■	■			■	■	■	■
Collins							■						
Greyson*						■	■			■	■	■	■
Upland*							■						
Wakefield	■		■		■	■	■				■		■

* Decorative deadbolt not available.

F-Series lever and knob finish options

	505/605	608	609	613	618	619	620	621	622	625	626	716
LEVERS												
Accent	■	■	■	■	■	■	■	■	■	■	■	■
Avanti	■		■	■		■	■		■	■		■
Avila	■		■			■			■	■		■
Birmingham						■			■	■		■
Broadway						■			■	■	■	■
Elan	■		■						■	■		■
Flair	■	■	■	■		■	■		■	■	■	■
Jazz	■		■			■					■	
Latitude					■	■			■	■	■	■
Manhattan						■			■	■		
Merano						■			■	■	■	■
Northbrook						■						
Sacramento					■	■				■	■	■
KNOBS												
Bell	■		■								■	
Bowery					■	■			■	■	■	■
Georgian	■	■	■			■	■	■	■	■		■
Orbit	■		■	■		■	■		■	■	■	
Plymouth	■		■	■		■	■		■	■	■	■
Siena	■		■	■		■	■		■	■	■	■
DECORATIVE TRIM FOR LEVERS & KNOBS												
Addison	■		■			■	■	■	■	■		■
Andover*	■		■	■		■	■		■	■	■	■
Brookshire	■		■			■			■			■
Camelot	■	■	■	■		■	■		■	■		■
Century	■				■	■			■	■	■	■
Collins						■						
Greenwich						■			■	■	■	■
Greyson*					■	■			■	■	■	■
Upland*						■						
Wakefield	■		■	■	■	■	■		■	■	■	■

* Decorative deadbolt not available.

J-Series finish options

	505/605	609	619	620	625		626	630	716
HANDLESETS									
Barcelona	■	■	■	■	■		■	■	
Paris	■	■	■		■		■	■	
DEADBOLTS									
Keyed one side (JD60)	■	■	■	■	■		■	■	■
LEVERS									
Dover			■				■		
LaSalle	■	■	■					■	
Marin			■				■		
Seville			■		■			■	
Solstice			■		■		■		■
Torino			■	■	■		■	■	■
KNOBS									
Byron	■						■		
Corona	■	■	■	■	■		■	■	
Stratus	■		■		■		■	■	



Warranty information

BE-Series & FE-Series

Limited lifetime mechanical & finish warranty and limited 3-year electronics warranty

B-Series and F-Series

Limited lifetime mechanical & finish warranty

J-Series

Limited lifetime mechanical warranty and limited 5 year finish warranty

VISIT [SCHLAGE.COM](https://www.schlage.com) FOR COMPLETE WARRANTY INFORMATION

About Allegion™

Allegion (NYSE: ALLE) is a global pioneer in safety and security, with well-known brands like CISA®, Interflex®, LCN®, Schlage® and Von Duprin®. Focusing on security around the door and adjacent areas, Allegion produces a range of solutions for homes, businesses, schools and other institutions. Allegion is a \$2 billion company, with products in more than 120 countries around the world.

For more, visit www.allegion.com

aptiQ ■ LCN ■ **SCHLAGE** ■ STEELCRAFT ■ VON DUPRIN

Apple TV, iPad, iPhone, iPod, iPod touch and Siri are trademarks of Apple Inc., registered in the U.S. and other countries. HomeKit is a trademark of Apple Inc. The Bluetooth® word mark and logos are registered trademarks owned by Bluetooth SIG, Inc. and any use of such marks by Schlage Lock Company, LLC is under license.



ALLEGION™

© 2016 Allegion
MR-4081, Rev 03/16
schlage.com